

RETRACTA-BELT[®]

SAFETY SYSTEM



P/N 20001



P/N 20007



Magnetic Retracta-Belt® Systems

Chromate's Retracta-Belt® Systems are designed to improve the safety and versatility of jobsite safety while increasing productivity. These units are used every day where maintenance or cleaning is being performed, allowing or restricting access into your working environment. Ideal for warehouse aisles, hallways, and doorways (ie, bathroom facilities).

Great for hospitals, nursing homes, casinos, hotels, universities, public schools, utility companies, railroads, apartment/condo complexes, etc.

- **High impact polycarbonate construction**
 - Internal mechanism and body for long term durability
- Extended top ridge protects the unit during falls
- All parts easily replaceable
- 10 year warranty
- Unit available in smooth black or safety yellow
- Magnet Strength
 - Unit/housing magnet: 82 lbs. pull force
 - Belt end magnet: 20 lbs. pull force
- **Dimensions:** 4-1/8" W x 5-1/8" D x 3-7/8" H

Yellow Unit

- 15' Yellow Belt
- CAUTION – DO NOT ENTER
(Black imprint, double-sided)

P/N 20001

Black Unit

- 15' Red Belt
- DANGER - HIGH VOLTAGE
- DO NOT ENTER
(White imprint, double-sided)

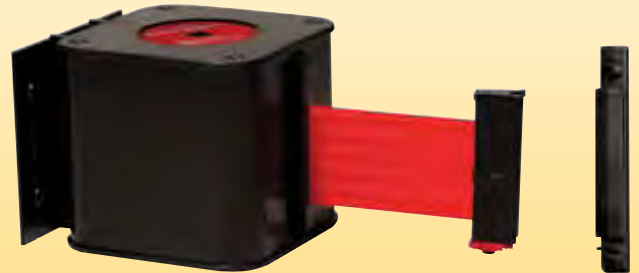
P/N 20007

P/N	UNIT TYPE	BELT LENGTH	BELT COLOR	IMPRINT	TEXT	SIDES
20000	BLACK MAGNETIC	15'	BLACK	BLANK	NA	N/A
20001*	YELLOW MAGNETIC	15'	YELLOW	CAUTION - DO NOT ENTER	BLACK	DOUBLE
20001C	YELLOW MAGNETIC WITH CLIP	15'	YELLOW	CAUTION - DO NOT ENTER	BLACK	DOUBLE
20002	YELLOW MAGNETIC	30'	YELLOW	CAUTION - DO NOT ENTER	BLACK	DOUBLE
20003	BLACK MAGNETIC	30'	RED	DANGER - HIGH VOLTAGE - DO NOT ENTER	WHITE	DOUBLE
20004	BLACK MAGNETIC	30'	RED	DANGER! ARC FLASH BOUNDARY - DO NOT ENTER	WHITE	DOUBLE
20005	YELLOW MAGNETIC	30'	YELLOW	CONTROLLED WORK AREA	BLACK	DOUBLE
20006	YELLOW MAGNETIC	15'	YELLOW	CONTROLLED WORK AREA	BLACK	DOUBLE
20007	BLACK MAGNETIC	15'	RED	DANGER - HIGH VOLTAGE - DO NOT ENTER	WHITE	DOUBLE
20008	BLACK MAGNETIC	15'	RED	SUPPLY PERSONNEL ONLY	WHITE	DOUBLE
20009	YELLOW MAGNETIC	20'	YELLOW	CAUTION - DO NOT ENTER	BLACK	DOUBLE
20010MR	YELLOW MAGNETIC	15'	RED	DANGER - DO NOT ENTER - LIFT IN PROGRESS	WHITE	SINGLE
20010ML	YELLOW MAGNETIC	15'	RED	DANGER - DO NOT ENTER - LIFT IN PROGRESS	WHITE	SINGLE
20011MR	YELLOW MAGNETIC	30'	RED	DANGER - DO NOT ENTER - LIFT IN PROGRESS	WHITE	SINGLE
20011ML	YELLOW MAGNETIC	30'	RED	DANGER - DO NOT ENTER - LIFT IN PROGRESS	WHITE	SINGLE
20012	BLACK MAGNETIC	15'	RED	DO NOT ENTER	WHITE	DOUBLE
20013	BLACK MAGNETIC	30'	RED	DO NOT ENTER	WHITE	DOUBLE
20014	YELLOW HOSE CLAMP UP TO 12" DIA.	15'	YELLOW	CAUTION - DO NOT ENTER	BLACK	DOUBLE
20015	YELLOW MAGNETIC	15'	RED	DANGER ELECTRICAL SHOCK / ARC / HAZARD	WHITE	SINGLE
20016	YELLOW MAGNETIC	15'	RED	DANGER ELECTRICAL SHOCK / ARC / HAZARD	WHITE	SINGLE
20017	BLACK MAGNETIC	30'	RED	DANGER - DO NOT ENTER	WHITE	DOUBLE
20018	YELLOW MAGNETIC	30'	YELLOW	CAUTION - WELDING IN PROGRESS - DO NOT ENTER	BLACK	DOUBLE
20019	YELLOW MAGNETIC	15'	GREEN	DANGER - HIGH VOLTAGE - DO NOT ENTER	WHITE	DOUBLE
20020	YELLOW MAGNETIC	30'	GREEN	CAUTION	WHITE	DOUBLE
20021	YELLOW ALUM POST WITH WHEELS	25'	YELLOW	CAUTION - DO NOT ENTER	BLACK	DOUBLE
20022	RED ALUMINUM POST ONLY – NO BELT	N/A	N/A	N/A	N/A	N/A
20023MR	YELLOW MAGNETIC	30'	YELLOW	SMART TEAM WORK AREA	BLACK	SINGLE
20023ML	YELLOW MAGNETIC	30'	YELLOW	SMART TEAM WORK AREA	BLACK	SINGLE
20024	MAGNET MOUNT REPLACEMENT	N/A	N/A	N/A	N/A	N/A
20025	YELLOW HOSE CLAMP UP TO 12" DIA.	15'	YELLOW	N/A	N/A	N/A
20026	YELLOW WALL MOUNT	15'	YELLOW	CAUTION - DO NOT ENTER	BLACK	DOUBLE
20027	YELLOW MAGNETIC	15'	YELLOW	CLOSED FOR CLEANING	BLACK	DOUBLE
20028	REPLACEMENT BELT END	N/A	N/A	N/A	N/A	N/A
20029	WALL RECEIVING END	N/A	N/A	N/A	N/A	N/A

*Stocked item. All other part numbers will ship approximately 2 weeks after receipt of order. Lead time on custom items will be quoted as per the manufacturer's conditions.

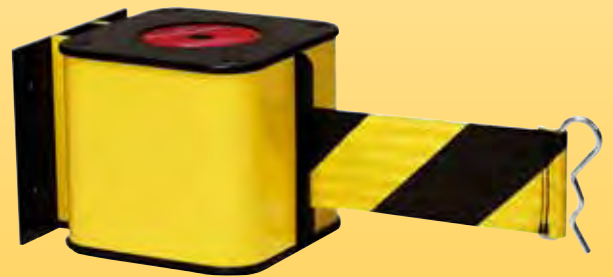
BELT[®] SAFETY SYSTEM

Wall Mount and Warehouse Retractable-Belt[®] Systems



P/N 20029

- **High impact polycarbonate construction:**
 - Internal mechanism and body for long term durability
- **Mountable units:** Allows quicker setups and frees up valuable floor space
- **Fixed/removable mounting plate:** Mounting plate is permanently attached to a surface. Unit slides on and off and can be "fixed" via a screw.
- **Transferable:** Purchase extra mounting plates and use one unit in multiple locations.
- Extended top ridge protects the unit during falls
- Units available in smooth black or safety yellow
- **Dimensions:** 4-1/8" W x 5-1/8" D x 3-7/8" H



Wall Mount Units

- Universal belt end: Attaches to receiving ends.
- Mountable receiving end and magnetic receiving ends sold separately.

Wall Mount & Warehouse Units

- "S-hook" belt end: Attaches to warehouse shelving or wraps around poles and connects to itself.



RETRACTA-BELT® SAFETY SYSTEM

Available Mounting Options

4 different mounting plate options:



- Fixed/Removable permanently attach mounting plate to wall, unit slides on and off easily or can be fixed via a screw



- Magnet/Clip allows unit to attach to shelving quickly by means of a strong magnet and clip that hooks into holes or slots in most shelving units (3/8" minimum slot or hole required)



- Velcro® straps for quick and temporary installation on any column or post ranging from 1-1/2" to 5" diameter (longer straps available)



- Hose clamp metal straps for a secure and semi-permanent connection to uprights

Custom Orders...

For CUSTOM orders, specify the following:

Housing Finish:
Smooth black or safety yellow

Mounting Style:

- Fixed/Removable
- Magnetic/Clip
- Velcro or Hose Clamp

Belt Length:
15', 20', 25' and 30'

Belt Color:
Standard colors are: Blue, Red, Maroon, Grey, Green, Dark Green, Black, Black w/White stripe, Dark Blue, Yellow, and Black/Yellow Diagonal

Printing:

- Text/Print
- One-side or double sided print
- Color of text
- Custom logo